



High and variable hydraulic resistance to embolism among three Asian juniper species

Maximilian Larter¹, Akbar Akhmedov², Cayley Payne¹, Sylvain Delzon¹, Tamir Klein³

Corresponding author: Tamir Klein, tamir.klein@weizmann.ac.il

Date of submission: 17 May 2024

Date of publication: 17 September 2024

Abstract

Over a background of a warming planet, with increasing occurrence of extreme climate events, junipers stand out as tree species thriving in inhospitable environments, enduring the cold, hot, and dry conditions. As part of the drought-adapted Cupressaceae Gray, some juniper species have been identified as having among the most negative P_{50} values (vulnerability to xylem embolism) in the plant kingdom. Still, previous analyses skipped many Asian juniper species, some of which grow in arid conditions. Here we measured xylem vulnerability to embolism in three, yet unexplored, Asian juniper species: *Juniperus drupacea* growing in Israel, and *J. pseudosabina* and *J. seravschanica* growing in Uzbekistan. Branches were sampled from five trees per species and vulnerability curves were constructed using the Cavitrone method, from which P_{50} was calculated. Xylem anatomy measurements were used to define torus overlap and maximum xylem specific hydraulic conductivity. These drought related traits were tested against species and site climate, and in the context of species phylogeny. P_{50} of the Eastern Mediterranean *J. drupacea* was -11.8 ± 0.3 MPa, much more negative than that of the two Asian junipers measured here, but within the same range of P_{50} values measured in European and North American junipers. P_{50} was more negative with mean annual temperature and with aridity index of the driest quarter at both species (climatic conditions at the entire distribution range) and site levels. We did not find the relationships generally observed in conifers between the properties of xylem pit membrane and vulnerability to embolism, nor with the overall aridity of the environment. To the best of our knowledge, our observations identify *J. drupacea* as the most drought-tolerant tree species in Asia.

Introduction

Drought-tolerant trees and shrubs are critical components of Mediterranean and arid zone ecosystems (Larter *et al.*, 2017; Klein, 2020; Akhmedov *et al.*, 2021). With climate change increasing heatwave and drought intensity and frequency in many of these regions, understanding how vulnerable these species are to environmental stress is important (Willson and Jackson, 2006; Larter *et al.*, 2017; Wagner *et al.*, 2022). Junipers, conifers from the widespread family Cupressaceae, are among the most drought-tolerant genera of trees in the world, and count over 50 species appearing in semiarid regions across the northern hemisphere. Some of these species also grow at remarkably wide seasonal temperature ranges, enduring annual minimum and maximum temperatures of -20 °C and $+40$ °C, respectively (Willson and Jackson, 2006; Seim *et al.*, 2016). Considering the ongoing global warming on the one hand, and the increasing occurrence

of extreme climatic events on the other hand (Reyer *et al.*, 2013), junipers can become focal tree species in the near future.

In North America, many juniper species were reported to increase in distribution and abundance in arid and semiarid regions, *e.g.*, across western and central USA (Willson *et al.*, 2008). Among 14 studied juniper species, survival during extreme droughts in southwestern USA and expansion into arid habitats was explained by high xylem resistance to embolism (Willson *et al.*, 2008). For example, *Juniperus pinchotii* had 50% loss of hydraulic conductance (P_{50} , related to xylem embolism) at a very negative water potential of -14.1 MPa. Among four Arizona Juniper species, divergent resistance to embolism was measured under both freezing and drought backgrounds (Willson and Jackson, 2006).

In drylands from the Mediterranean to central Asia, junipers are widespread, with often disjunct and

relictual endemic distributions (Boratynski *et al.*, 2023). As such, they are vulnerable to extinction, especially on the dry margin of their ranges. Drought stress related with climate change was reported to increase in the mountains of central Asia, where junipers growing at lower elevations became sensitive to increasing summer drought (Seim *et al.*, 2016). At higher elevations, juniper growth, previously favored by warm summer temperatures, has become negatively affected by increasing summer aridity. Among Mediterranean junipers, plant ecology and physiology have just recently been investigated (Baquedano and Castillo, 2007; Boratynski *et al.*, 2023; Korakaki *et al.*, 2024). Pollen records from lake sediments in the Levant indicate junipers' existence along the past millennia in locations where they are missing today (Bar-On *et al.*, 2022).

Recent ecophysiological studies have highlighted that xylem embolism is a key mechanism inducing plant death from individual leaves and branches through to ecosystem scale dieback events (Anderegg *et al.*, 2016; Cardoso *et al.*, 2020; Mantova *et al.*, 2022; McDowell *et al.*, 2022; Sorek *et al.*, 2023). Junipers are known to be an embolism resistant genus, explaining their survival during dieback events that affect co-occurring conifer species (McDowell *et al.*, 2008). However, we still lack a broad understanding of the variation in drought-related functional traits in this genus. P_{50} is a major index of xylem vulnerability to embolism, indicating the water potential inducing 50% loss of xylem conductivity due to embolism. Variation in P_{50} across tree species is large, with a P_{50} being less negative than -4 MPa for many tree species (Choat *et al.*, 2012). Yet, some species stand out with a P_{50} of -10 MPa or less, notably among the two Cupressaceae subfamilies (Callitroideae in the southern hemisphere and Cupressoideae in the northern hemisphere (Pittermann *et al.*, 2010). Among these, some juniper and callitris species have been identified (Larter, 2016). Interestingly, in terms of global distribution, most of the tree species with high resistance to embolism (P_{50} of -10 MPa or lower) are from Australia and North America, with none from Eurasia (Willson *et al.*, 2008; Larter *et al.*, 2017).

In conifers, water transport occurs through single-celled tracheids that are interconnected via pit membranes (Hacke and Jansen, 2009; Delzon *et al.*, 2010; Pittermann *et al.*, 2010). Contrary to former belief, embolism resistance is conferred mostly through pit anatomy, rather than tracheid anatomy (Bouche *et al.*, 2014). Pit membranes have two components: the porous margo, allowing water to pass through the membrane, and a central, impermeable, thickening, namely the torus, which isolates gas-filled tracheids. Under drought, tracheids can become air-filled and hence hydraulically dysfunctional when the torus margo fails

and an air bubble penetrates a functional conduit, nucleating embolism in the water column. Pit depth and torus thickness correlated positively with embolism resistance in three boreal conifer species (Hacke and Jansen, 2009). Across 15 Cupressaceae species, embolism resistance was most closely correlated with the ratio of the torus to pit aperture diameter, i.e., the torus overlap (Delzon *et al.*, 2010; Pittermann *et al.*, 2010). A large overlap between the torus and the pit aperture allows the torus to tightly seal the pit aperture when needed. This embolism resistance mechanism was corroborated in analyses testing an increasing number of conifer species: among 28 species (Song *et al.*, 2022), among 40 species (Delzon *et al.*, 2010) and among 115 species (Bouche *et al.*, 2014). Within ecotypes of the key Mediterranean species *Pinus halepensis*, torus overlap and pit aperture size also correlated with P_{50} variations (David-Schwartz *et al.*, 2016). However, information about Eurasian juniper species is scarce.

Here we studied xylem functional traits of three species of junipers in three distinct field sites, namely *Juniperus drupacea* (Mt. Hermon, Israel), *J. pseudosabina* (Zaamin National Park, Uzbekistan), and *J. seravschanica* (Aman-Kutan mountains, Uzbekistan) with the aim of better understanding their xylem resistance to embolism, and its relationships to xylem anatomy and climatic variables. We then put these results in the context of the global phylogeny of the genus *Juniperus*. Our hypotheses were that (1) embolism resistance is correlated with aridity, therefore the species growing in drier areas would have the more negative P_{50} , and (2) that embolism resistance would be linked to coordinated changes in xylem anatomy, specifically to pit structure features.

Materials and Methods

Study species, sites, and climate

We studied mature trees of three Eurasian *Juniperus* species: two from central Asia (*J. pseudosabina* and *J. seravschanica*) and one Mediterranean *Juniperus* species (*J. drupacea*). The latter is a tree species growing in the eastern Mediterranean region from Greece to Syria and Israel. In this study, we sampled individual trees from a population in Mount Hermon, in northern Israel (Fig. 1; Table 1). *J. drupacea* trees can reach 20 m in height and are included in the IUCN list of species. *J. drupacea* study trees were 5-8 m in height and 38-63 cm in diameter at breast height (DBH). *J. pseudosabina* are shrubs or small trees growing up to 10 m tall at elevations of 2000 to 4000 m in Afghanistan and to the north-east to China and Mongolia. *J. seravschanica* (*J. excelsa* subsp. *polycarpus*) grows up to 20 m tall and occurs in mountain ranges at 1200 m to 3000 m from eastern Turkey to the Caspian Sea, and east into Afghanistan, Pakistan and India.

Table 1: A summary of juniper species and study sites, with major climatic characteristics for each site. MAT, mean annual temperature; MAP, mean annual precipitation; PDQ, precipitation of the driest quarter.

<i>Juniperus</i> species	Study site	Coordinates	Elevation (m)	Bedrock	MAT (°C)	MAP (mm)	PDQ (mm)
<i>J. pseudosabina</i>	Zaamin NP, Uzbekistan	39°62'82"N 68°49'21"E	2100	Schist	4	800	30
<i>J. seravschanica</i>	Aman-Kutan, Uzbekistan	39°17'22"N 66°54'58"E	1400	Limestone and quartz	10	230	10
<i>J. drupacea</i>	Mt. Hermon, Israel	33°17'18"N 35°44'21"E	1400	Limestone	15	1200	0



Figure 1: Sampling sites and study trees of the three Eurasian Juniper species. Sites and species match horizontally. For geographical locations see Table 1 and Fig. 2.

J. seravschanica (*J. excelsa* subsp. *polycarpus*) grows up to 20 m tall and occurs in mountain ranges at 1200 m to 3000 m from eastern Turkey to the Caspian Sea, and east into Afghanistan, Pakistan and India. The two Asian species were respectively sampled in Zaamin National Park and the Aman-Kutan mountains in Uzbekistan (Fig. 1; Table 1). *J. pseudosabina* study trees were 5-12 m in height and 70-110 cm in DBH. *J. drupacea* study trees were 5-12 m in height and 60-110 cm in DBH. For each species, we downloaded occurrences from GBIF (Holstein, 2001) (<https://www.gbif.org>), and manually curated them to remove points that landed outside of the natural ranges of the species (Farjon, 2010; Earle, 2024) (conifers.org). For the remaining points (*J. drupacea*, $n=75$; *J. pseudosabina*, $n=423$; *J. seravschanica*, $n=156$), we obtained historical climatic data (1970 to 2000) from the worldclim v2.1 layers at 2.5-minute resolution (Fick & Hijmans, 2017) using R (R Development Core Team, 2022), which we summarized to obtain median and quantiles of the climate range of each species. Considering drought-induced embolism, we chose to focus on mean annual temperature, mean annual precipitation, and precipitation of the driest quarter. We also calculated the aridity index of the driest quarter, as the ratio between precipitation and potential evapotranspiration of the driest quarter.

Branch sampling

For each species at each site, we selected 5 individual trees, from which we collected several branches in April 2022. Across sites, April marks the end of the wet season, when trees are well-hydrated and frost-free, i.e., when xylem embolism is highly unlikely. We selected straight branch segments from lower, but exposed, parts of the crowns, with no side branches, and with

diameters of around 1 cm and a length of approximately 40 cm. All leaves were removed and the samples were wrapped in damp paper towels, triple-bagged and sent to the Caviplace lab (INRAE, University of Bordeaux, France) for measurement of hydraulic traits.

Hydraulic functional traits

Embolism resistance was characterized by P_{50} , which was calculated based on vulnerability curves measured using the Cochard Cavitron method (Cochard *et al.*, 2013). This technique uses centrifugal force to generate xylem tension in a branch sample and allows the rapid estimation of flow of water through the sample. By measuring xylem conductance at decreasing xylem pressure steps, we can determine the samples' vulnerability curve, and estimate the xylem pressure inducing 50% loss of hydraulic conductance, P_{50} . K_s was calculated as the hydraulic conductivity measured in the Cavitron at the lowest rotation speed (i.e., the highest water potential, before any conductance is lost to embolism). For each species, we measured 3 branches from each of 5 trees. Since xylem conduits in

junipers are tracheids, there is no risk of an "open-vessel" artefact and so-called "r-shaped" curves reported in some angiosperm species (Torres-Ruiz *et al.*, 2017). A sigmoid Pammenter model was fit to each individual curves using SAS software (Pammenter and Van der Willigen, 1998). Vulnerability curves, corresponding to percentage loss of hydraulic conductivity (PLC, %) as a function of xylem pressure (P) were fitted using the NLIN procedure in SAS 9.4 (SAS, Cary, NC, USA) based on the following equation:

$$\text{Eq. (1)} \quad \text{PLC} = 100 / (1 + \exp(S/25 * (P - P_{50})))$$

where P_{50} (MPa) is the xylem pressure/water potential inducing 50% loss of hydraulic conductivity and S (% MPa⁻¹) is the slope of the vulnerability curve at the inflection point. To place the data in a broader context, we obtained published data for other juniper species (Hammond *et al.*, 2021). All anatomical observations were carried out on material that had previously been used for measuring embolism vulnerability. We selected four individuals for each species, choosing the samples that were closest to the average P_{50} value. We observed the samples with a benchtop scanning electron microscope at the PHENOBOIS platform of University of Bordeaux-INRAE (PhenomG2 pro; FEI, The Netherlands). Samples 5–8 mm long were cut with a razor blade in a radial direction. After drying for 24 h in an oven at 70 °C, the samples were fixed on stubs, coated with gold using a sputter coater (108 Auto; Cressington, UK) for 40 s at 20 mA, and observed under 5 kV. All anatomical features were based on earlywood, which is responsible for most of the hydraulic conductance. Average values for pit anatomical traits were determined based on at least 20 measurements per sample, made using ImageJ 1.52r (Schindelin *et al.*, 2012). We measured 20 pits per individual, four individuals per species.

In situ xylem water potential

To learn more about the more resistant *J. drupacea*, further investigation was performed. In September 2022, at the end of the dry season in Mt. Hermon (Israel), a field campaign was carried out. Tips of branches of *J. drupacea* were wrapped in sealed, tin-foiled plastic bags for 30 min. for equilibration prior to sampling and were then cut and their water potential (WP) was measured in situ. Since transpiration was arrested on these tips, the measured WP could indicate the xylem, and not leaf, WP. The seasonal timing of measurement was chosen to represent the driest conditions on site, with the annual minimum soil moisture (~13 % v/v) (Bar-On *et al.*, 2022) and a high vapor pressure deficit (VPD) of >4 kPa. Xylem WP was measured using a pressure chamber (PMS Instruments, Albany, OR, USA) on branch tips from five trees at three cycles, in three cycles: 12:10-12:50; 12:50-13:25;

and 13:25-14:00. Xylem WP was measured exclusively for *J. drupacea*, and not for the other two species.

Data analysis

We tested the effect of species on hydraulic functional traits (P_{50} , torus overlap, and K_s). We applied a generalized linear model approach and compared means using the stepwise multiple comparisons procedure using a Student-Newman-Keuls Test. In addition, linear regressions were calculated for the correlations between P_{50} and climatic data (temperature and precipitation). To represent the evolutionary relationships of the three study species within the *Juniperus* genus, we used a published molecular phylogeny (Forest *et al.*, 2018). All statistical tests were performed in R software and in SAS software (SAS® OnDemand for Academics, Cary, NC, USA).

Results

Distribution ranges of the studied species diverged from a relatively small region for *Juniperus drupacea* (Eastern Mediterranean) to a larger region for *J. seravschanica* (central and western Asia) and a very large region for *J. pseudosabina* (central Asia and Northeast into Siberia). Expectedly, range-wide climatic conditions for the two Asian species were larger than for the Mediterranean species, also reflecting the higher climatic variability in continental vs. coastal habitats (Fig. 2). Overall, *J. drupacea* was confined to a relatively narrow range of mean annual temperatures, which mostly represented the warmer edge of the Asian species. The latter species' distributions spanned over locations with up to 30 °C mean annual temperature difference and mostly overlapped between the species, with *J. seravschanica* occupying warmer locations and *J. pseudosabina* occupying colder locations (Fig. 2).

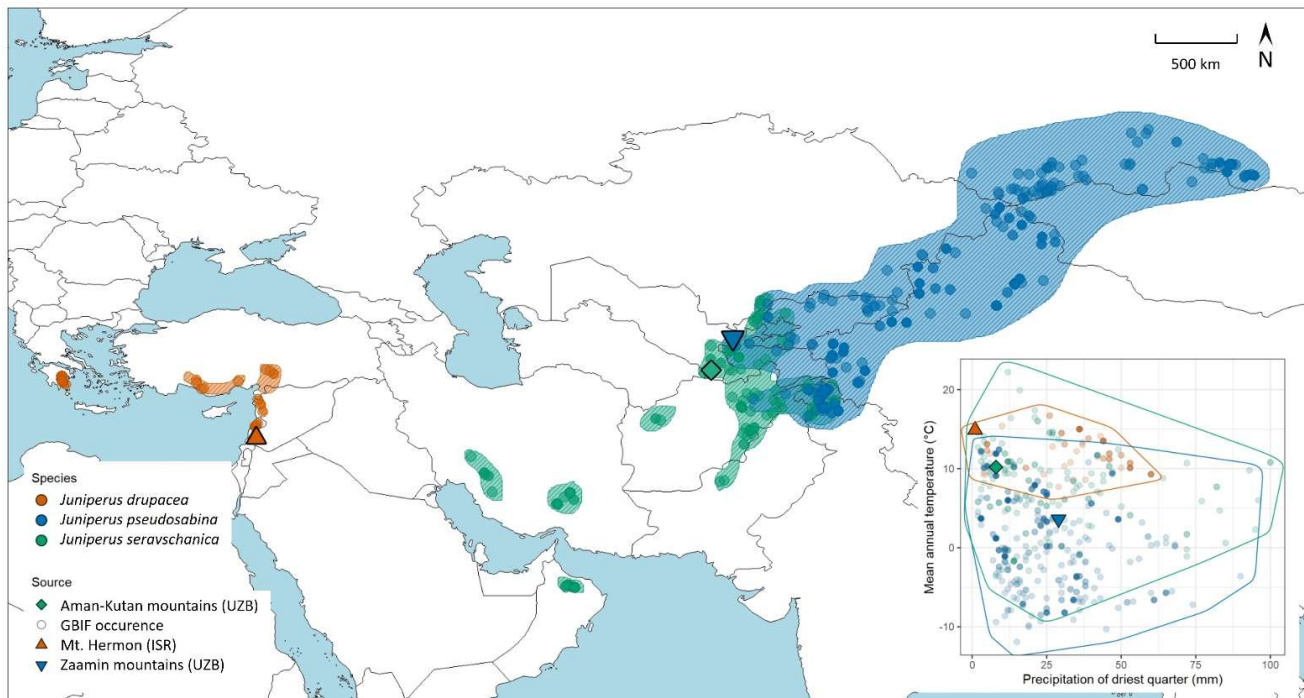


Figure 2: Distributions and climatic envelopes of three Eurasian Juniper species. Distribution ranges were constructed according to occurrence data from GBIF.org (circles). Sampling locations are denoted over the map and within the climatic space of precipitation of the driest quarter and mean annual temperature (inset).

Comparing among the species' locations by precipitation of the driest quarter (PDQ) showed that most populations inhabited locations with a distinctive dry season (0-50 mm during the driest quarter), while some *J. seravschanica* and *J. pseudosabina* populations at higher precipitation locations (50-100 mm during the driest quarter). The specific populations studied here (Table 1) did not necessarily represent the average

climatic conditions for each species. For *J. drupacea*, Mt. Hermon with a mean annual temperature (MAT) of 15 °C was on the warmer side of its MAT range from 7 °C to 17 °C. For *J. seravschanica*, Aman-Kutan (MAT = 10 °C) was on the warmer side of its MAT range from -10 °C to 24 °C. However, for *J. pseudosabina*, Zamin (MAT = 4 °C) was in the middle of its MAT range from -14 °C to 14 °C. Similarly, Mt. Hermon and Aman-

Kutan were on the drier side of their species' PDQ range, while Zaamin was roughly in the middle. Overall, the studied populations spanned between the dry and warm *J. drupacea* and the cold and wetter *J. pseudosabina*, with the *J. seravschanica* population in the middle.

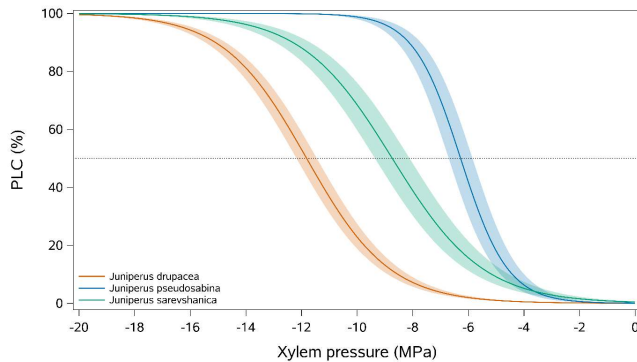


Figure 3: Vulnerability curves to xylem embolism of three Eurasian Juniper species. Curves were constructed using the Cavitrion method ($n = 5$ trees per species). PLC, percent loss of conductivity.

Xylem embolism resistance varied widely across the three studied junipers (Fig. 3). *J. drupacea* was the most embolism resistant with a $P_{50} = -11.8 \pm 0.3$ MPa, followed by *J. seravschanica* ($P_{50} = -8.7 \pm 0.8$ MPa) and *J. pseudosabina* ($P_{50} = -6.3 \pm 0.6$ MPa). Differences in P_{50} among the three species were significant ($P < 0.0001$). To further investigate the more resistant *J. drupacea*, xylem water potential (WP) was measured on the same five trees sampled in the field. Overall, WP in *J. drupacea* at midday at the end of the dry season was -4.85 ± 0.19 MPa.

Among xylem anatomy traits, torus overlap ranged between 0.20 and 0.42 μm across the species, with large intra-species variations. However, there was no difference among species ($P = 0.23$ -1.00 in pairwise comparisons using Kruskal-Wallis test). Therefore, there was no correlation between torus overlap and P_{50} (Fig. 4).

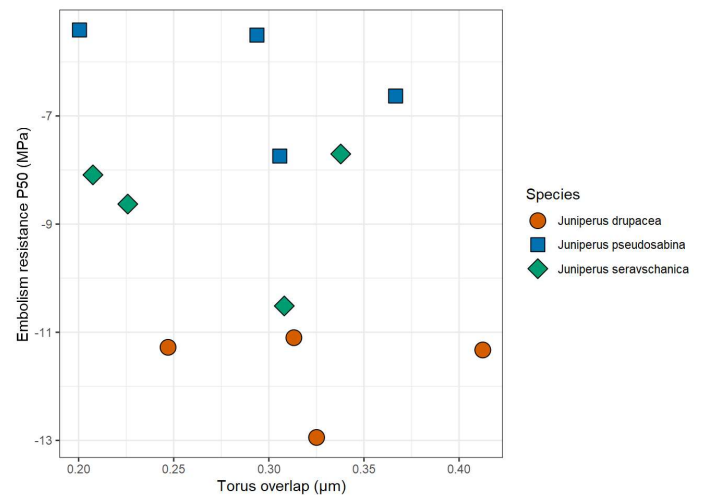


Figure 4: The relationship between xylem vulnerability to embolism (P_{50} ; MPa) and torus overlap (μm) across three Eurasian Juniper species. Data points represent branches from individual trees.

Maximum xylem specific hydraulic conductivity was also less variable among species than P_{50} , with K_s values ranging from $2.26 \cdot 10^{-4} \text{ kg m}^{-1} \text{ MPa}^{-1} \text{ s}^{-1}$ in *J. seravschanica* (*polycarpus*) to $3.62 \cdot 10^{-4} \text{ kg m}^{-1} \text{ MPa}^{-1} \text{ s}^{-1}$ in *J. pseudosabina*. The most embolism resistant species, *J. drupacea* was intermediate with $K_s = 2.86 \cdot 10^{-4} \text{ kg m}^{-1} \text{ MPa}^{-1} \text{ s}^{-1}$. We further plotted P_{50} , torus overlap, and K_s against mean annual temperature and precipitation of the driest quarter for each species and site (Fig. 5). We found that hydraulic trait variation did not relate to the climate of the species, nor to the sampling sites, for both torus overlap and K_s . However, P_{50} aligned well with mean annual temperature at both species and population (site) levels, whereby P_{50} was more negative by ~ 1 MPa for each 2°C warming ($P_{50} = -0.55 \times \text{MAT} - 4.98$; $r^2 = 0.997$; linear regression based on Fig. 5). P_{50} aligned well also with precipitation of the driest quarter at the site level, whereby P_{50} was more negative by ~ 1 MPa for each 6 mm drying ($P_{50} = 0.17 \times \text{MAT} - 11.21$; $r^2 = 0.917$; linear regression based on Fig. 5). Interestingly, this relationship did not express at the species level, i.e., overall, the most drought tolerant species, *J. drupacea*, did not inhabit drier sites than the Asian species. Next, P_{50} was plotted against the aridity index of the driest quarter (Fig. 6). Xylem embolism resistance was higher (P_{50} was more negative) for species with higher aridity (lower value of aridity index). This strong relationship was evident at both species ($P_{50} = 18.2 \times \text{AI} - 12.0$; $r^2 = 0.811$) and site levels ($P_{50} = 40.57 \times \text{AI} - 10.9$; $r^2 = 0.835$).

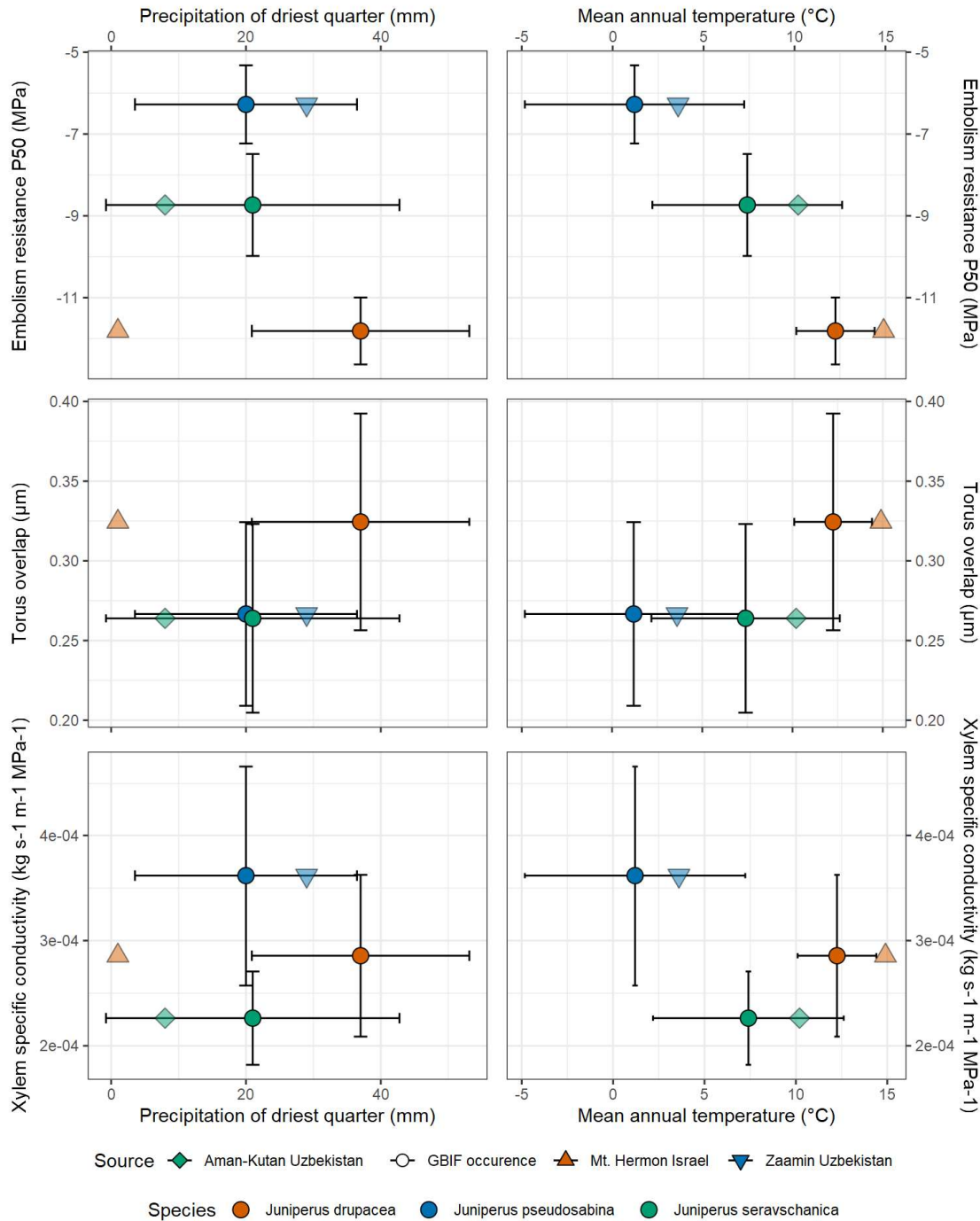


Figure 5: Relationships between three hydraulic traits (y-axes) and two climatic variables (x-axes) across three Eurasian *Juniper* species. Circles and error bars represent averages \pm SE for each species based on its entire distribution range (Fig. 2), with other shapes denoting the climatic conditions at the specific study sites.

Finally, we added the newly measured P_{50} values for the three juniper species (Fig. 3) to P_{50} values measured previously for 16 juniper species (out of 53 known juniper species worldwide). The three Eurasian juniper

species studied here were within the genus P_{50} range between -6 MPa (*J. squamata*) and -14 MPa (*J. pinchotii*). Specifically, only three species had more negative P_{50} than *J. drupacea*. Unlike the Mediterranean

J. drupacea, those were new world species. There was no evident relationship between the species-specific P_{50} and aridity at the species' range. For example, both *J. pinchotii* and *J. drupacea* were from less arid sites than those of *J. seravschanica (polycarpus)* and *J. pseudosabina*. Notably, the two Asian junipers studied here represented the highest aridity for the genus.

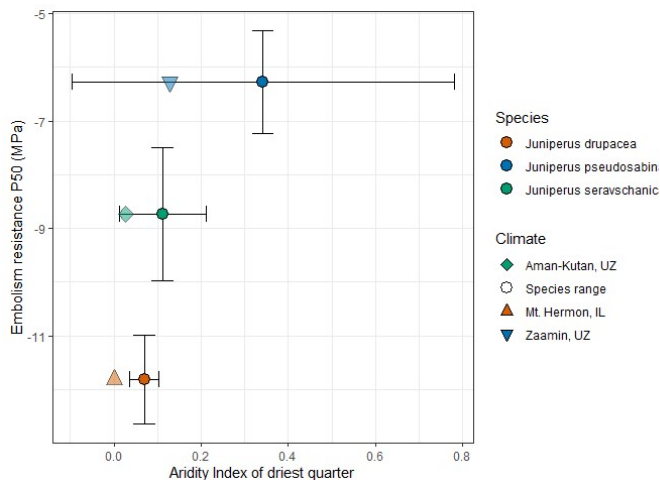


Figure 6: The relationship between xylem vulnerability to embolism (P_{50} ; MPa) and the aridity index of the driest quarter across three Eurasian Juniper species. Circles and error bars represent averages \pm SE for each species based on its entire distribution range (Fig. 2), with other shapes denoting the climatic conditions at the specific study sites.

Discussion

In this study we measured hydraulic vulnerability to xylem embolism in three, yet unexplored, Asian juniper species: *Juniperus drupacea* growing in Israel, and *J. pseudosabina* and *J. seravschanica* growing in Uzbekistan. The P_{50} of the Eastern Mediterranean *J. drupacea* was -11.8 ± 0.3 MPa, *i.e.*, the most drought-tolerant tree species in Asia, to the best of our knowledge. Although the Asian species *J. pseudosabina* and *J. seravschanica* were significantly less drought-resistant, they are still very well adapted to extreme droughts.

Our first hypothesis was that embolism resistance is correlated with aridity, therefore the species growing in drier areas would have the more negative P_{50} . Our results counter this hypothesis, since the Asian species *J. pseudosabina* and *J. seravschanica* were less resistant than the Mediterranean *J. drupacea* (Fig. 3), despite the Asian species growing in very arid environments. Contrary to another Cupressaceae genus with drought

affinities, *Callitris* (Larter *et al.*, 2017), we found little evidence of a strong correlation between embolism resistance and aridity across 19 species of junipers (Fig. 7). How can we reconcile the weak relationships between aridity and embolism resistance in the three *Juniperus* species? We suggest three potential explanations to this observation. First, climate at the specific Israeli site was warmer and with the driest summer (Fig. 5). In other words, it is not the annual precipitation amount that matters for embolism resistance, but rather the length and intensity of the dry season (Table 1). Indeed, when P_{50} was plotted exclusively against the aridity index of the driest quarter, the expected relationship was observed (Fig. 6). Mt. Hermon in Israel has a long rainless season following heavy snowfalls in winter; both affecting its observed exceptionally low treeline (Bar-On *et al.*, 2022). This explanation agrees with the first in situ measurements of embolism dynamics in trees, performed in *Pinus halepensis* in a semi-arid forest (Wagner *et al.*, 2022). These measurements showed that embolism occurs during heatwaves, due to the combination of hot and dry conditions (Wagner *et al.*, 2022). A second explanation relates to the exposure of the two Asian species to very cold conditions (Fig. 2). Across four Arizona juniper species, hydraulic vulnerability to a drought-freezing combination was higher than to drought-induced embolism alone (Willson and Jackson, 2006). It is hence possible that freezing (Fig. 2) had a role in decreasing embolism resistance for the Asian species, compared to the Mediterranean species, which is rarely exposed to temperatures < -5 °C in Mt. Hermon (Bar-On *et al.*, 2022). The third explanation considers that the Israeli population represents in fact the warm and dry range edge for *J. drupacea*, far from the species' average conditions. It is well-known that marginal populations can significantly differ from core populations of a given tree species (Lerner *et al.*, 2023). Specifically for *J. drupacea*, the Greek populations differ genetically and morphologically from the Asian populations (Boratynski *et al.*, 2023). It is hence possible that P_{50} of the Greek *J. drupacea* is less negative than that of *J. pseudosabina* and *J. seravschanica*, as expected. However, hydraulic safety (P_{50}) and efficiency were conserved across *J. communis* ecotypes spanning from southern France to northern Sweden (Unterholzer *et al.*, 2020). Therefore, this explanation is not supported.

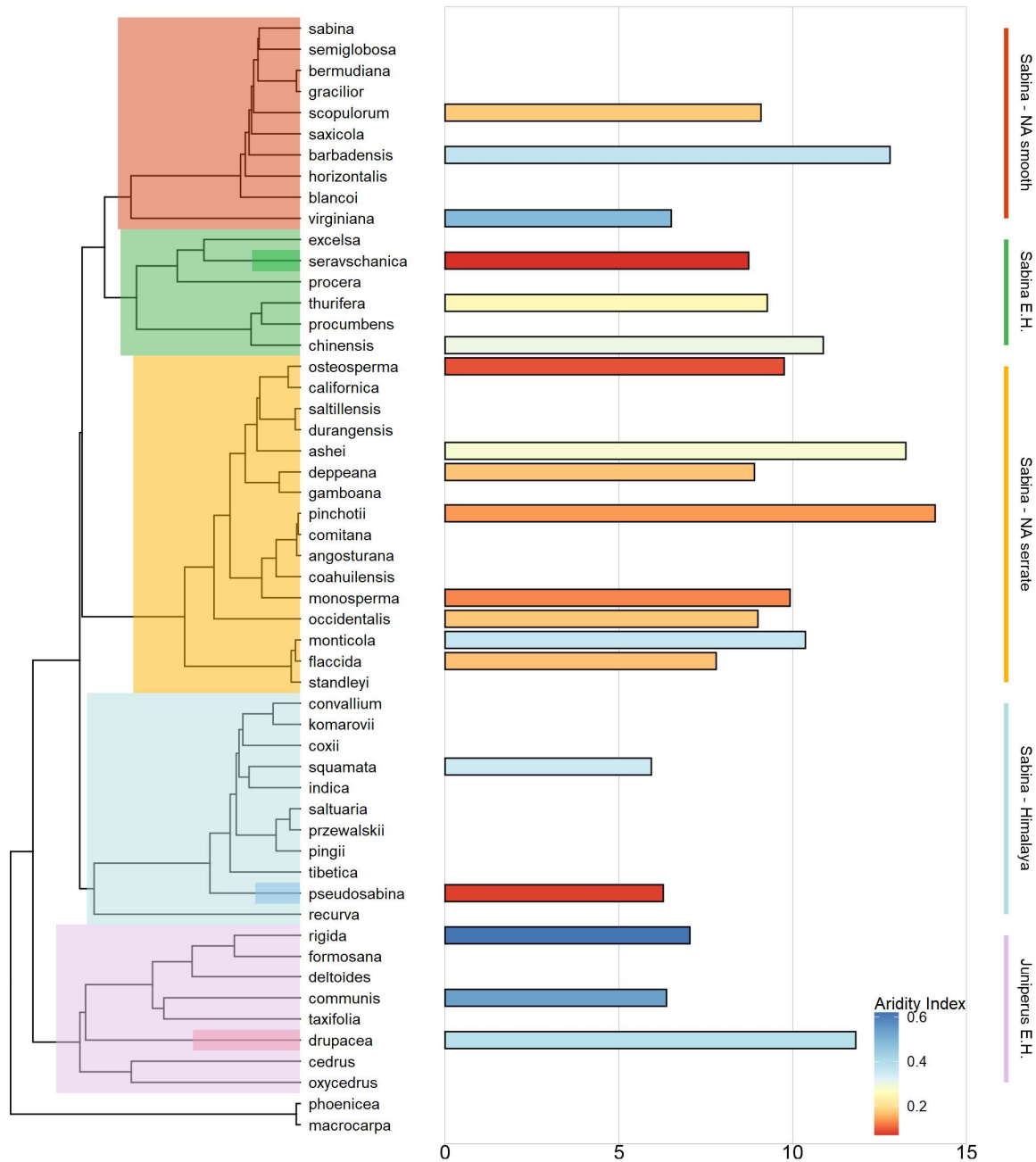


Figure 7: Xylem vulnerability to embolism (P_{50} , -MPa) for measured species across the phylogeny of the genus Juniperus. Bar colors denote the 5th percentile of the aridity index of the species distribution (see legend on bottom right corner; high aridity is denoted by low values and red color). The three Eurasian Juniperus species studied here are marked within their respective phylogenetic clades, which are highlighted in color.

To what extent are the studied juniper species under climatic risk? Here, in situ minimum xylem WP of *J. drupacea* was ~-5.0 MPa. Comparing this value with the species' vulnerability curve (Fig. 3) indicates zero

embolism for these trees during the driest time of the year. This WP value is lower than that of another Mediterranean juniper species, *J. phoenicea*, which measured -3.5 MPa in dry season midday (Baquedano

and Castillo, 2007). WP in *J. virginiana* was measured down to -6.2 MPa when exposed to a rapid soil dry-down in a greenhouse experiment (Long *et al.*, 2023). In addition, *J. drupacea* can enforce stomatal closure during the driest quarter, as observed in sap flow behavior in a Greek population (Korakaki *et al.*, 2024). In other words, its hydraulic safety margin is potentially wide, as reported in *J. virginiana* from the most arid, with P_{50} as much as 3.25 MPa less negative than minimum shoot water potentials measured (Long *et al.*, 2023). Therefore, the studied *J. drupacea* trees are probably rather safe at current conditions; suggesting a potential to withstand future drying; highlighting the need to protect these species from direct anthropogenic effects like deforestation (Guo *et al.*, 2022), having higher chance of surviving compared to other tree species. Still, extreme events like severe or long heatwaves with high VPD might push *J. drupacea* to its hydraulic limit faster than we think (Wagner *et al.*, 2022). Notably, a WP of \sim -5.0 MPa as measured here would mean 10-20% loss of conductivity for the Asian species (Fig. 3). Indeed, the *J. seravschanica* trees studied here in Zaamin National Park were part of a region-wide study reporting increased drought stress observed in junipers of central Asia (Seim *et al.*, 2016).

Our second hypothesis was that embolism resistance would be linked to coordinated changes in xylem anatomy, and specifically to pit structure features. A large overlap between the torus and the pit aperture allows the torus to tightly seal the pit aperture when needed, as shown in numerous conifer species (Delzon *et al.*, 2010, Pittermann *et al.*, 2010, Bouche *et al.*, 2014). Torus overlap values measured here were in the range of 0.20-0.42 μ m (Fig. 4) which is typical to many conifers, although slightly on the lower side (Bouche *et al.*, 2014). Within each species, there was rather high variability in P_{50} (Fig. 3), and moreover, in torus overlap (Fig. 4). Overall, torus overlap alone could not explain the large differences among the juniper species studied here. It is possible, however, that torus porosity, not measured here, played a role, e.g., if torus pores are more prevalent in the xylem of the less embolism-resistant juniper species studied here. In 13 out of 33 conifer species, pores were found, using electron microscopy, within the torus (Jansen *et al.*, 2012). The pores have a plasmodesmatal origin, an average diameter of 51 nm, and arrange in groups. While junipers were not included in that study, three other Cupressaceae species did have pores in the torus (Jansen *et al.*, 2012). Alternatively, could margo traits explain

the interspecific P_{50} differences observed here? Past studies of conifer hydraulics showed mixed results. Margo porosity did not vary systematically with embolism resistance among 15 Cupressaceae species (Pittermann *et al.*, 2010). Among 40 conifer species, highly embolism resistant species exhibited high flexibility of the margo (Delzon *et al.*, 2010). But in a more extensive study of 115 conifer species, the flexibility of the margo did not seem to play a role (Bouche *et al.*, 2014). Last, we also tested the relationship between xylem hydraulic conductivity and climatic variables, which were weak (Fig. 5). Studying 28 conifer species (two juniper species included) grown in a 50-year-old common garden experiment, hydraulic conductivity was only negatively correlated with tracheid cell wall thickness (Song *et al.*, 2022). It remains to be tested if this tracheid trait played a role here.

This study was motivated by the remarkable climatic adaptability of Eurasian junipers on the one hand, and the pressing need to find tree species that would stand future climate extremes on the other hand. Among conifer species with P_{50} more negative than -10 MPa, only two are outside the Cupressaceae; a single family that includes 19 such embolism-resistant species (Larter, 2016). Among these 19 Cupressaceae species, nine belong to the Australian genus *Callitris*, where P_{50} variation was driven by aridity up to its most extreme value of -18.8 MPa, in *Callitris tuberculata* (Larter *et al.*, 2015; Larter *et al.*, 2017). Here we measured P_{50} of -11.8 ± 0.3 MPa in *J. drupacea* growing in Israel, indicating a good potential for survival under climate change. Junipers, including the *J. pseudosabina* and *J. seravschanica* studied here, dominate the landscape under the continental climate of central Asia. In North America, juniper species expand into arid habitats across the western and central USA (Willson *et al.*, 2008). What are the chances for such a scenario to happen in Eurasia? For example, *Pinus halepensis* populations were projected to gradually move northward with climate change (Patsiou *et al.*, 2020). The ability of the three juniper species to follow their climatic niche will likely be limited by elevation and geographical barriers. For example, in Israel, junipers only grow in two mountain sites, while lower regions are dominated by pines and oaks. But pines and oaks are presumably less drought-resistant than junipers, and hence, if we use junipers in current afforestation programs, we might be able to increase forest sustainability into the 21st century.



Acknowledgements

Adriano Sofo (University of Basilicata, Italy), Assaf Yaakobi, Yedidya Ben-Eliyahu, and Inon Aizik (The Weizmann Tree Lab) are acknowledged for their help in the Mt. Hermon field campaigns. The authors thank Yael Wagner (The Weizmann Tree Lab) who commented on an earlier version of this manuscript. Marylou Mantova (University of Florida), Emilie Isasa (University of Toronto) and an additional anonymous reviewer are acknowledged for their valuable comments during peer review. TK thanks the Edith and Nathan Goldenberg Career Development Chair; Mary and Tom Beck-Canadian Center for Alternative Energy Research; Larson Charitable Foundation New Scientist Fund; Yotam Project; Dana and Yossie Hollander; the Estate of Emile Mimran; and the Estate of Helen Nichunsky.

Author contributions

The study was initiated by TK, and most analyses were done by ML. Field samples were collected by AA and TK. Cavitron measurements were performed by CP and SD. Most figures were prepared by ML. The manuscript was written by TK, with contributions from all authors.

References

Akhmedov, A., Rog, I., Bachar, A., Shomurodov, H., Nasirov, M., & Klein, T. (2021). Higher risk for six endemic and endangered *Lagochilus* species in Central Asia under drying climate. *Perspectives in plant ecology, evolution and systematics*, 48, 125586. <https://doi.org/10.1016/j.ppees.2020.125586>

Anderegg, W. R., Klein, T., Bartlett, M., Sack, L., Pellegrini, A. F., Choat, B., & Jansen, S. (2016). Meta-analysis reveals that hydraulic traits explain cross-species patterns of drought-induced tree mortality across the globe. *Proceedings of the National Academy of Sciences*, 113(18), 5024-5029. <https://doi.org/10.1073/pnas.1525678113>

Baquedano, F. J., & Castillo, F. J. (2007). Drought tolerance in the Mediterranean species *Quercus coccifera*, *Quercus ilex*, *Pinus halepensis*, and *Juniperus phoenicea*. *Photosynthetica*, 45, 229-238. <https://doi.org/10.1007/s11099-007-0037-x>

Bar-On, P., Yaakobi, A., Moran, U., Rozenstein, O., Koplner, I., & Klein, T. (2022). A montane species treeline is defined by both temperature and drought effects on growth season length. *Tree physiology*, 42(9), 1700-1719. <https://doi.org/10.1093/treephys/tpac070>

Boratynski, A., Donmez, A. A., Bou Dagher-Kharrat, M., Romo, A., Tan, K., Ok, T., ... & Marcysiak, K. (2023). Biology and ecology of *Juniperus drupacea* Labill. *Dendrobiology*, 90. <https://doi.org/10.12657/denbio.090.001>

Bouche, P. S., Larter, M., Domec, J. C., Burrett, R., Gasson, P., Jansen, S., & Delzon, S. (2014). A broad survey of hydraulic and mechanical safety in the xylem of conifers. *Journal of Experimental Botany*, 65(15), 4419-4431. <https://doi.org/10.1093/jxb/eru218>

Cardoso, A. A., Batz, T. A., & McAdam, S. A. (2020). Xylem embolism resistance determines leaf mortality during drought in *Persea americana*. *Plant physiology*, 182(1), 547-554. <https://doi.org/10.1104/pp.19.00585>

Choat, B., Jansen, S., Brodribb, T. J., Cochard, H., Delzon, S., Bhaskar, R., ... & Zanne, A. E. (2012). Global convergence in the vulnerability of forests to drought. *Nature*, 491(7426), 752-755. <https://doi.org/10.1038/nature11688>

Cochard, H., Badel, E., Herbette, S., Delzon, S., Choat, B., & Jansen, S. (2013). Methods for measuring plant vulnerability to cavitation: a critical review. *Journal of Experimental Botany*, 64(15), 4779-4791. <https://doi.org/10.1093/jxb/ert193>

David-Schwartz, R., Paudel, I., Mizrahi, M., Delzon, S., Cochard, H., Lukyanov, V., ... & Cohen, S. (2016). Indirect evidence for genetic differentiation in vulnerability to embolism in *Pinus halepensis*. *Frontiers in Plant Science*, 7, 768. <https://doi.org/10.3389/fpls.2016.00768>

Delzon, S., Douthe, C., Sala, A., & Cochard, H. (2010). Mechanism of water-stress induced cavitation in conifers: bordered pit structure and function support

the hypothesis of seal capillary-seeding. *Plant, Cell & Environment*, 33(12), 2101-2111.

<https://doi.org/10.1111/j.1365-3040.2010.02208.x>

Earle, C.J. (2024). The Gymnosperm Database: conifers.org.

Farjon, A. (2010). *A Handbook of the World's Conifers: Revised and Updated Edition*. Brill. <https://doi.org/10.1163/9789047430629>

Fick, S. E., & Hijmans, R. J. (2017). WorldClim 2: new 1-km spatial resolution climate surfaces for global land areas. *International journal of climatology*, 37(12), 4302-4315. <https://doi.org/10.1002/joc.5086>

Forest, F., Moat, J., Baloch, E., Brummitt, N. A., Bachman, S. P., Ickert-Bond, S., ... & Buerki, S. (2018). Gymnosperms on the EDGE. *Scientific reports*, 8(1), 6053. <https://doi.org/10.1038/s41598-018-24365-4>

Guo, W. Y., Serra-Diaz, J. M., Schrodte, F., Eiserhardt, W. L., Maitner, B. S., Merow, C., ... & Svenning, J. C. (2022). High exposure of global tree diversity to human pressure. *Proceedings of the National Academy of Sciences*, 119(25), e2026733119. <https://doi.org/10.1073/pnas.2026733119>

Hacke, U. G., & Jansen, S. (2009). Embolism resistance of three boreal conifer species varies with pit structure. *New Phytologist*, 182(3), 675-686. <https://doi.org/10.1111/j.1469-8137.2009.02783.x>

Hammond W, Choat B, Johnson D, Ali Ahmed M, Anderegg L, Barigah TS, Barros F, Bartlett M, Bauerle T, Beikircher B, et al. (2021). The global vulnerability of plant xylem. 2021AGUFM.B31F..07H.

Holstein, J. (2001). GBIF: global biodiversity information facility. University of Ulm.

Jansen, S., Lamy, J. B., Burlett, R., Cochard, H., Gasson, P., & Delzon, S. (2012). Plasmodesmatal pores in the torus of bordered pit membranes affect cavitation resistance of conifer xylem. *Plant, Cell & Environment*, 35(6), 1109-1120. <https://doi.org/10.1111/j.1365-3040.2011.02476.x>

Klein, T. (2020). A race to the unknown: Contemporary research on tree and forest drought

resistance, an Israeli perspective. *Journal of arid environments*, 172, 104045.

<https://doi.org/10.1016/j.jaridenv.2019.104045>

Korakaki, E., Avramidou, E. V., Solomou, A. D., Boutsios, S., & Daskalaku, E. N. (2024). Sap Flow Responses of the Endangered Species *Juniperus drupacea* Labill. to Environmental Variables in Parnon Mountain, Greece. *Forests*, 15(3), 431. <https://doi.org/10.3390/f15030431>

Larter, M., Brodribb, T. J., Pfautsch, S., Burlett, R., Cochard, H., & Delzon, S. (2015). Extreme aridity pushes trees to their physical limits. *Plant Physiology*, 168(3), 804-807. <https://doi.org/10.1104/pp.15.00223>

Larter, M., Pfautsch, S., Domec, J. C., Trueba, S., Nagalingum, N., & Delzon, S. (2017). Aridity drove the evolution of extreme embolism resistance and the radiation of conifer genus *Callitris*. *New Phytologist*, 215(1), 97-112. <https://doi.org/10.1111/nph.14545>

Larter, Maximilian. The evolution of cavitation resistance in conifers. Diss. Université de Bordeaux, 2016.

Lerner, D., Martínez, M. F., Livne-Luzon, S., Belmaker, J., Peñuelas, J., & Klein, T. (2023). A biome-dependent distribution gradient of tree species range edges is strongly dictated by climate spatial heterogeneity. *Nature plants*, 9(4), 544-553. <https://doi.org/10.1038/s41477-023-01369-1>

Long, R. W., Ward, D., Baker, C., & Medeiros, J. S. (2023). Some Like It Dry: Differences in Water Use Strategies between Historic and Range-Expanding Populations of *Juniperus virginiana*. *International Journal of Plant Sciences*, 184(7), 507-518. <https://doi.org/10.1086/725385>

Mantova, M., Herbette, S., Cochard, H., & Torres-Ruiz, J. M. (2022). Hydraulic failure and tree mortality: from correlation to causation. *Trends in Plant Science*, 27(4), 335-345. <https://doi.org/10.1016/j.tplants.2021.10.003>

McDowell, N. G., Sapes, G., Pivovarov, A., Adams, H. D., Allen, C. D., Anderegg, W. R., ... & Xu, C. (2022). Mechanisms of woody-plant mortality under rising drought, CO₂ and vapour pressure deficit.

- Nature Reviews Earth & Environment, 3(5), 294-308.
<https://doi.org/10.1038/s43017-022-00272-1>
- McDowell, N., Pockman, W. T., Allen, C. D., Breshears, D. D., Cobb, N., Kolb, T., ... & Yezzer, E. A. (2008). Mechanisms of plant survival and mortality during drought: why do some plants survive while others succumb to drought?. *New phytologist*, 178(4), 719-739. <https://doi.org/10.1111/j.1469-8137.2008.02436.x>
- Pammenter, N. V., & Van der Willigen, C. (1998). A mathematical and statistical analysis of the curves illustrating vulnerability of xylem to cavitation. *Tree physiology*, 18(8-9), 589-593.
<https://doi.org/10.1093/treephys/18.8-9.589>
- Patsiou, T. S., Shestakova, T. A., Klein, T., Di Matteo, G., Sbay, H., Chambel, M. R., ... & Voltas, J. (2020). Intraspecific responses to climate reveal nonintuitive warming impacts on a widespread thermophilic conifer. *New Phytologist*, 228(2), 525-540.
<https://doi.org/10.1111/nph.16656>
- Pittermann, J., Choat, B., Jansen, S., Stuart, S. A., Lynn, L., & Dawson, T. E. (2010). The relationships between xylem safety and hydraulic efficiency in the Cupressaceae: the evolution of pit membrane form and function. *Plant Physiology*, 153(4), 1919-1931.
<https://doi.org/10.1104/pp.110.158824>
- Reyer, C. P., Leuzinger, S., Rammig, A., Wolf, A., Bartholomeus, R. P., Bonfante, A., ... & Pereira, M. (2013). A plant's perspective of extremes: terrestrial plant responses to changing climatic variability. *Global change biology*, 19(1), 75-89.
<https://doi.org/10.1111/gcb.12023>
- Sáenz-Romero, C., Larter, M., González-Muñoz, N., Wehenkel, C., Blanco-García, A., Castellanos-Acuña, D., ... & Delzon, S. (2017). Mexican conifers differ in their capacity to face climate change. *Journal of Plant Hydraulics*, 4, e003.
<https://doi.org/10.20870/jph.2017.e003>
- Schindelin, J., Arganda-Carreras, I., Frise, E., Kaynig, V., Longair, M., Pietzsch, T., ... & Cardona, A. (2012). Fiji: an open-source platform for biological-image analysis. *Nature methods*, 9(7), 676-682.
<https://doi.org/10.1038/nmeth.2019>
- Seim, A., Omurova, G., Azisov, E., Musuraliev, K., Aliev, K., Tulyaganov, T., ... & Linderholm, H. W. (2016). Climate change increases drought stress of Juniper trees in the mountains of Central Asia. *PLoS one*, 11(4), e0153888.
- Song, Y., Poorter, L., Horsting, A., Delzon, S., & Sterck, F. (2022). Pit and tracheid anatomy explain hydraulic safety but not hydraulic efficiency of 28 conifer species. *Journal of Experimental Botany*, 73(3), 1033-1048.
<https://doi.org/10.1371/journal.pone.0153888>
- Sorek, Y., Netzer, Y., Cohen, S., & Hochberg, U. (2023). Rapid leaf xylem acclimation diminishes the chances of embolism in grapevines. *Journal of Experimental Botany*, 74(21), 6836-6846.
<https://doi.org/10.1093/jxb/erad351>
- Torres-Ruiz, J. M., Cochard, H., Choat, B., Jansen, S., Lopez, R., Tomášková, I., ... & Delzon, S. (2017). Xylem resistance to embolism: presenting a simple diagnostic test for the open vessel artefact. *New Phytologist*, 215(1), 489-499.
<https://doi.org/10.1111/nph.14589>
- Unterholzner, L., Carrer, M., Bär, A., Beikircher, B., Dämon, B., Losso, A., ... & Mayr, S. (2020). Juniperus communis populations exhibit low variability in hydraulic safety and efficiency. *Tree Physiology*, 40(12), 1668-1679.
<https://doi.org/10.1093/treephys/tpaa103>
- Wagner, Y., Feng, F., Yakir, D., Klein, T., & Hochberg, U. (2022). In situ, direct observation of seasonal embolism dynamics in Aleppo pine trees growing on the dry edge of their distribution. *New Phytologist*, 235(4), 1344-1350.
<https://doi.org/10.1111/nph.18208>
- Willson, C. J., & Jackson, R. B. (2006). Xylem cavitation caused by drought and freezing stress in four co-occurring Juniperus species. *Physiologia Plantarum*, 127(3), 374-382. <https://doi.org/10.1111/j.1399-3054.2006.00644.x>
- Willson, C. J., Manos, P. S., & Jackson, R. B. (2008). Hydraulic traits are influenced by phylogenetic history in the drought-resistant, invasive genus Juniperus (Cupressaceae). *American journal of botany*, 95(3), 299-314. <https://doi.org/10.3732/ajb.95.3.299>